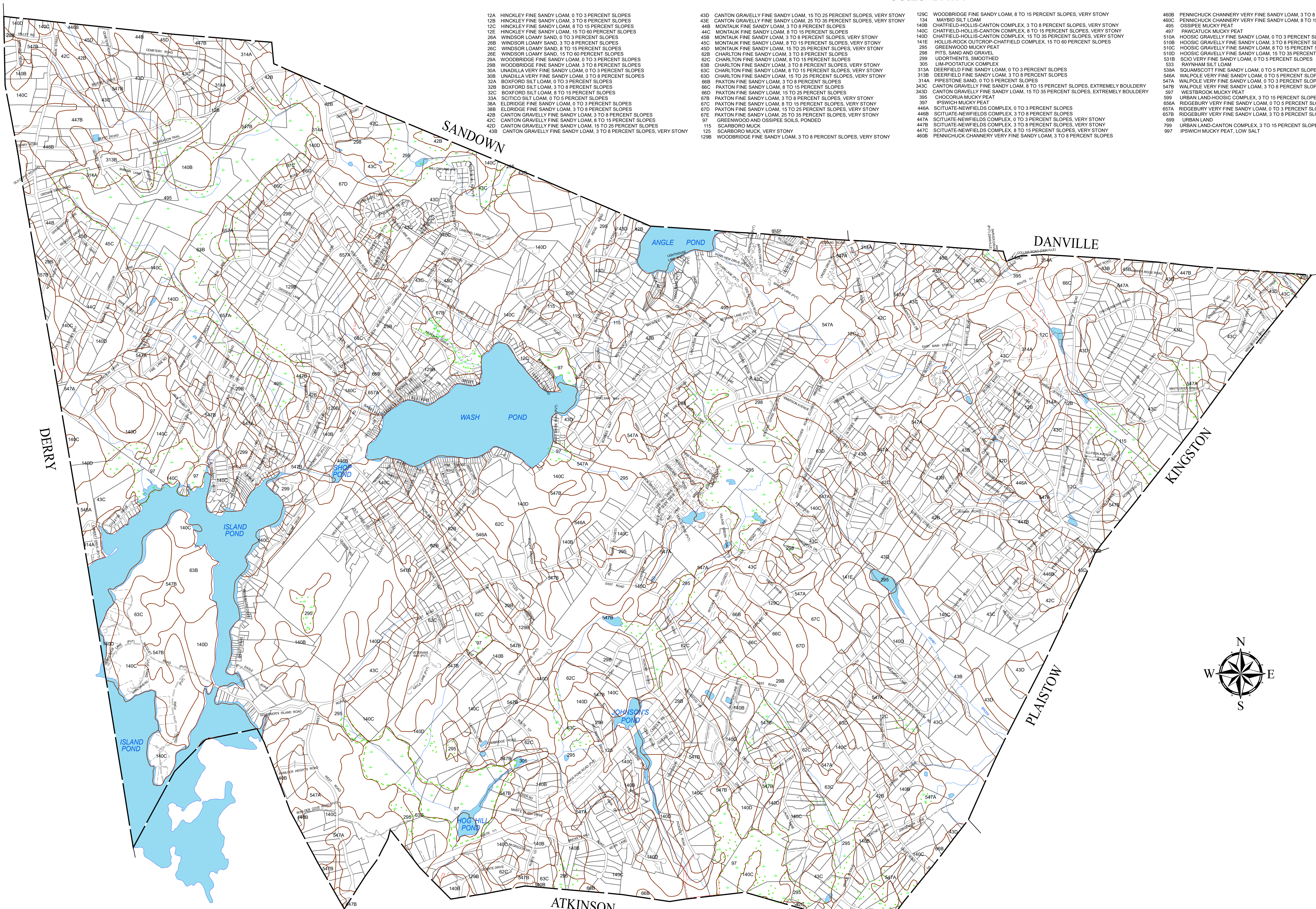


**SOILS DATA**

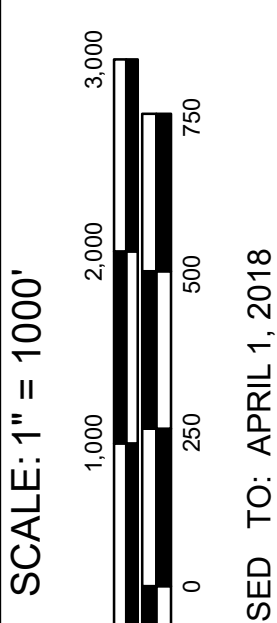
- 12A HINCKLEY FINE SANDY LOAM, 0 TO 3 PERCENT SLOPES
- 12B HINCKLEY FINE SANDY LOAM, 3 TO 8 PERCENT SLOPES
- 12C HINCKLEY FINE SANDY LOAM, 8 TO 15 PERCENT SLOPES
- 12E HINCKLEY FINE SANDY LOAM, 15 TO 60 PERCENT SLOPES
- 26A WINDSOR LOAMY SAND, 0 TO 3 PERCENT SLOPES
- 26B WINDSOR LOAMY SAND, 3 TO 8 PERCENT SLOPES
- 26C WINDSOR LOAMY SAND, 8 TO 15 PERCENT SLOPES
- 29A WOODBRIDGE FINE SANDY LOAM, 0 TO 3 PERCENT SLOPES
- 29B WOODBRIDGE FINE SANDY LOAM, 3 TO 8 PERCENT SLOPES
- 29C WOODBRIDGE FINE SANDY LOAM, 8 TO 15 PERCENT SLOPES
- 30A UNADILLA VERY FINE SANDY LOAM, 0 TO 3 PERCENT SLOPES
- 30B UNADILLA VERY FINE SANDY LOAM, 3 TO 8 PERCENT SLOPES
- 30C UNADILLA VERY FINE SANDY LOAM, 8 TO 15 PERCENT SLOPES
- 32A BOXFORD SILT LOAM, 0 TO 3 PERCENT SLOPES
- 32B BOXFORD SILT LOAM, 3 TO 8 PERCENT SLOPES
- 32C BOXFORD SILT LOAM, 8 TO 15 PERCENT SLOPES
- 33A SCITICUS SILT LOAM, 0 TO 5 PERCENT SLOPES
- 38A ELDRIDGE FINE SANDY LOAM, 0 TO 3 PERCENT SLOPES
- 38B ELDRIDGE FINE SANDY LOAM, 3 TO 8 PERCENT SLOPES
- 42B CANTON GRAVELLY FINE SANDY LOAM, 3 TO 8 PERCENT SLOPES
- 42C CANTON GRAVELLY FINE SANDY LOAM, 8 TO 15 PERCENT SLOPES
- 42D CANTON GRAVELLY FINE SANDY LOAM, 15 TO 25 PERCENT SLOPES
- 43B CANTON GRAVELLY FINE SANDY LOAM, 3 TO 8 PERCENT SLOPES, VERY STONY
- 43D CANTON GRAVELLY FINE SANDY LOAM, 15 TO 25 PERCENT SLOPES, VERY STONY
- 43E CANTON GRAVELLY FINE SANDY LOAM, 25 TO 35 PERCENT SLOPES, VERY STONY
- 44B MONTAUK FINE SANDY LOAM, 8 TO 15 PERCENT SLOPES
- 44C MONTAUK FINE SANDY LOAM, 15 TO 25 PERCENT SLOPES
- 45B MONTAUK FINE SANDY LOAM, 3 TO 8 PERCENT SLOPES, VERY STONY
- 45C MONTAUK FINE SANDY LOAM, 8 TO 15 PERCENT SLOPES, VERY STONY
- 45D MONTAUK FINE SANDY LOAM, 15 TO 25 PERCENT SLOPES, VERY STONY
- 62B CHARLTON FINE SANDY LOAM, 3 TO 8 PERCENT SLOPES
- 62C CHARLTON FINE SANDY LOAM, 8 TO 15 PERCENT SLOPES
- 63B CHARLTON FINE SANDY LOAM, 3 TO 8 PERCENT SLOPES, VERY STONY
- 63C CHARLTON FINE SANDY LOAM, 8 TO 15 PERCENT SLOPES, VERY STONY
- 63D CHARLTON FINE SANDY LOAM, 15 TO 25 PERCENT SLOPES, VERY STONY
- 67B PATXON FINE SANDY LOAM, 3 TO 8 PERCENT SLOPES, VERY STONY
- 67C PATXON FINE SANDY LOAM, 8 TO 15 PERCENT SLOPES, VERY STONY
- 67D PATXON FINE SANDY LOAM, 15 TO 25 PERCENT SLOPES, VERY STONY
- 67E PATXON FINE SANDY LOAM, 25 TO 35 PERCENT SLOPES, VERY STONY
- 97 GREENWOOD AND OSSISPEE SOILS, PONDED
- 115 SCARBORO MUCK
- 125 SCARBORO MUCK, VERY STONY
- 129B WOODBRIDGE FINE SANDY LOAM, 3 TO 8 PERCENT SLOPES, VERY STONY
- 129C WOODBRIDGE FINE SANDY LOAM, 8 TO 15 PERCENT SLOPES, VERY STONY
- 13A MAYBID SILT LOAM
- 13B CHATFIELD-HOLLIS-CANTON COMPLEX, 3 TO 8 PERCENT SLOPES, VERY STONY
- 140C CHATFIELD-HOLLIS-CANTON COMPLEX, 15 TO 35 PERCENT SLOPES, VERY STONY
- 295 GREENWOOD MUCKY PEAT
- 298 PITS, SAND AND GRAVEL
- 299 UDORTHENTS, SMOOTHED
- 305 LIM-POOTATUCK COMPLEX
- 313A DEERFIELD FINE SANDY LOAM, 0 TO 3 PERCENT SLOPES
- 313B DEERFIELD FINE SANDY LOAM, 3 TO 8 PERCENT SLOPES
- 314A PIPESTONE SAND, 0 TO 5 PERCENT SLOPES
- 343C CANTON GRAVELLY FINE SANDY LOAM, 8 TO 15 PERCENT SLOPES, EXTREMELY BOULDERY
- 343D CANTON GRAVELLY FINE SANDY LOAM, 15 TO 35 PERCENT SLOPES, EXTREMELY BOULDERY
- 395 CHOCORUA MUCKY PEAT
- 397 IPSWICH MUCKY PEAT
- 446A SCITUATE-NEWFIELDS COMPLEX, 0 TO 3 PERCENT SLOPES
- 446B SCITUATE-NEWFIELDS COMPLEX, 3 TO 8 PERCENT SLOPES
- 447A SCITUATE-NEWFIELDS COMPLEX, 0 TO 3 PERCENT SLOPES, VERY STONY
- 447B SCITUATE-NEWFIELDS COMPLEX, 3 TO 8 PERCENT SLOPES, VERY STONY
- 447C SCITUATE-NEWFIELDS COMPLEX, 8 TO 15 PERCENT SLOPES, VERY STONY
- 460B PENNICHUCK CHANNERY VERY FINE SANDY LOAM, 3 TO 8 PERCENT SLOPES
- 460C PENNICHUCK CHANNERY VERY FINE SANDY LOAM, 8 TO 15 PERCENT SLOPES
- 495 OSSISPEE MUCKY PEAT
- 497 PAWCATUCK MUCKY PEAT
- 510A HOOSIC GRAVELLY FINE SANDY LOAM, 0 TO 3 PERCENT SLOPES
- 510B HOOSIC GRAVELLY FINE SANDY LOAM, 3 TO 8 PERCENT SLOPES
- 510C HOOSIC GRAVELLY FINE SANDY LOAM, 8 TO 15 PERCENT SLOPES
- 510D HOOSIC GRAVELLY FINE SANDY LOAM, 15 TO 35 PERCENT SLOPES
- 531B SCIO VERY FINE SANDY LOAM, 0 TO 5 PERCENT SLOPES
- 533 RAYHAM SILT LOAM
- 538A SQUAMSCOTT FINE SANDY LOAM, 0 TO 5 PERCENT SLOPES
- 546A WALPOLE VERY FINE SANDY LOAM, 0 TO 5 PERCENT SLOPES
- 547A WALPOLE VERY FINE SANDY LOAM, 0 TO 3 PERCENT SLOPES, VERY STONY
- 547B WALPOLE VERY FINE SANDY LOAM, 3 TO 8 PERCENT SLOPES, VERY STONY
- 559 URBAN LAND-HOOSIC COMPLEX, 3 TO 15 PERCENT SLOPES
- 656A RIDGEBURY VERY FINE SANDY LOAM, 0 TO 5 PERCENT SLOPES
- 657A RIDGEBURY VERY FINE SANDY LOAM, 0 TO 3 PERCENT SLOPES, VERY STONY
- 657B RIDGEBURY VERY FINE SANDY LOAM, 3 TO 8 PERCENT SLOPES, VERY STONY
- 699 URBAN LAND
- 799 URBAN LAND-CANTON COMPLEX, 3 TO 15 PERCENT SLOPES
- 997 IPSWICH MUCKY PEAT, LOW SALT



THE DATA ON THIS MAP HAS BEEN COMPILED FROM A VARIETY OF SOURCES GRANTED VOLUNTARILY BY PRIVATE OWNERS AND OFFICIAL SOURCES AND IS NOT TO BE CONSIDERED LEGAL LOCATION OF PROPERTY BOUNDARY LINES. THE TOWN OF HAMSTEAD ASSUMES NO RESPONSIBILITY FOR THE ACCURACY OF INDIVIDUAL PARCELS. ORIGINALLY PREPARED BY DOLLARD ASSOCIATES, AUBURN, NH.

REVISED & REPRINTED BY  
**CAI Technologies**  
 Precision Mapping. Geospatial Solutions.  
 11 Pleasant Street, Littleton, NH 03861  
 800.322.4541 • www.cai-tech.com

PROPERTY MAPS  
**HAMPSTEAD**  
 NEW HAMPSHIRE



SCALE: 1" = 1000'  
 REVISION TO: APRIL 1, 2018  
**SOILS MAP**

SOIL DATA FROM GRANIT SYSTEM