

# Surface Water Resources Map

## Hampstead

### New Hampshire

#### LEGEND

Watershed Boundary

#### Areas of Special Flood Hazard

##### Flood Zones

A	Area inundated by 1% annual chance flooding, for which no base flood elevations(BFEs) have been determined
AE	Area inundated by 1% annual chance flooding, for which base flood elevations have been determined
X500	Area inundated by 0.2% annual chance flooding; an area inundated by 1% annual chance flooding with average depths of less than 1 foot or with drainage areas less than 1 square mile; or an area protected by levees from 1% annual chance flooding.

#### National Wetlands Inventory

##### Wetland Type:

LACUSTRINE	PALUSTRINE (Scrub-Shrub)
PALUSTRINE (Emergent)	PALUSTRINE (Unconsolidated Bottom)
PALUSTRINE (Forested)	RIVERINE

#### Rockingham County Soil Survey

Very Poorly Drained Soils
Poorly Drained Soils
Hydric B - Non Hydric Complex or Association

#### BASE FEATURES

##### Roads by Legislative Class

Class I - Primary System
Class II - Secondary System
Class III - State Recreational
Class IV - within Compacts
Class V - Municipal
Class VI - Unmaintained Municipal
Private

##### Political Boundaries

State Boundary
County Boundary
Town Boundary
Railroad
Abandoned Railroad
Major Powerline
Major Pipeline

##### Surface Water Features

Stream, Shoreline
Intermittent Stream
Other Water Feature

Adjacent Municipalities

This is a static legend for the Rockingham Region. All features may not be present within the extent of this map.

#### MAP DATA SOURCES

**Watersheds** were delineated and automated by the New Hampshire Department of Environmental Services, Water Resources Division. Source maps for this data layer are USGS 1:24,000 Topographic Quadrangle maps and USDA Natural Resources Conservation Service 1:250,000 watershed maps.

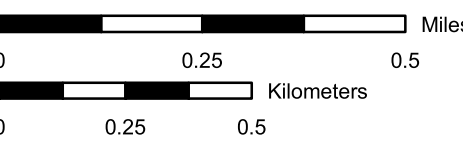
**Flood Hazard Areas** on this map are FEMA Q3 Flood Data. This information was extracted from the Federal Emergency Management Agency, National Flood Insurance Program, Q3 Flood Data DISC 23 (Maine, New Hampshire, Vermont). For more information about flood hazard areas, consult the following website: <http://www.fema.gov>.

The US Fish and Wildlife Service **National Wetlands Inventory** is an ongoing effort to map and inventory the wetland areas within the United States. National Wetlands Inventory wetlands were automated by the US Fish and Wildlife Service, National Wetlands Inventory, and were distributed by GRANIT, Complex Systems Research Center. Map source scale 1:24,000.

**Wetlands** shown on this map are derived from soils classified as "very poorly drained" and "poorly drained" by the USDA Natural Resources Conservation Service. Soil boundaries are from NRCS Rockingham County Soil Survey, published at 1:20,000 scale. Soil unit boundaries that coincide with water body boundaries in the field will not always coincide on this map, due to their differing data sources and scales. Information shown on this map is for planning purposes only. Data automation completed by Complex Systems Research Center, UNH, October 1999. Soils delineation based on field work, conducted by the USDA Natural Resource Conservation Service, completed in 1985.

#### Base Features

Base features (transportation, political and hydrographic) were automated from the USGS Digital Line Graph data, 1:24,000, as archived in the GRANIT database at Complex Systems Research Center, Institute for the study of Earth, Oceans and Space, University of New Hampshire, Durham, NH; 1992-1999. The roads within the Rockingham Planning Region have been updated by Rockingham Planning Commission and by NH Department of Transportation through ongoing efforts.



S:\d-hampstd-map\d-std\SurfWat\_hampst\_24x36.mxd